



ΕΘΝΙΚΟ ΜΕΤΣΟΒΙΟ ΠΟΛΥΤΕΧΝΕΙΟ
ΓΕΝ. Δ/ΝΣΗ ΔΙΟΙΚΗΤΙΚΗΣ ΣΤΗΡΙΞΗΣ ΚΑΙ ΣΠΟΥΔΩΝ
ΔΙΕΥΘΥΝΣΗ ΣΠΟΥΔΩΝ
ΤΜΗΜΑ ΜΕΤΑΠΤΥΧΙΑΚΩΝ ΣΠΟΥΔΩΝ ΚΑΙ ΕΡΕΥΝΑΣ

Ηρώων Πολυτεχνείου 9, Πολυτεχνειούπολη Ζωγράφου, 157 80, Αθήνα, ☎ 772-1352

Πληροφορίες: Ν. Διακογεωργίου/Α. Καλού
Τηλ.: 210 772-2008/1352
fax: 210772-1949

Αθήνα, 14 ΟΚΤ. 2015
Αρ. Πρωτ. 19042

ΕΘΝ. ΜΕΤΣ ΠΟΛΥΤΕΧΝΕΙΟΝ
ΤΜΗΜΑ ΠΟΛΙΤΙΚΩΝ ΣΠΟΥΔΩΝ
Αριθ. Πρωτ. 8385
Παρελήφθη 20/10/2015

Προς

✓ Τις Διοικητικές Υπηρεσίες των Σχολών του Ιδρύματος
Π.Μ.

ΘΕΜΑ: «Υποτροφίες του ιαπωνικού πενταετούς διδακτορικού κύκλου σπουδών με τίτλο: GRIPS – Global Governance Program (G-cube) σε Έλληνες υπηκόους για το 2015-2016»

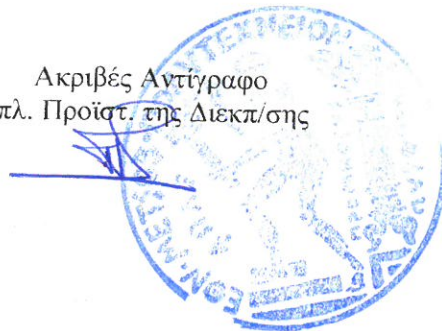
Σας διαβιβάζουμε το αρ. πρωτ. 158615/Ζ1/08.10.2015 έγγραφο του Υπουργείου Παιδείας, Έρευνας & Θρησκευμάτων και παρακαλούμε για την ενημέρωση των τυχόν ενδιαφερομένων.

Με εντολή του Πρύτανη
Η Προϊσταμένη της Δ/σης Σπουδών
Ε. Παπαγιάννη

Κοινοποίηση:

-Δ/ση Σπουδών, Τμήμα Μετ. Σπουδών & Έρευνας

Ακριβές Αντίγραφο
Αναπλ. Προϊστ. της Διεκπ/σης





ΕΛΛΗΝΙΚΗ ΔΗΜΟΚΡΑΤΙΑ
ΥΠΟΥΡΓΕΙΟ ΠΑΙΔΕΙΑΣ, ΕΡΕΥΝΑΣ
ΚΑΙ ΘΡΗΣΚΕΥΜΑΤΩΝ

ΓΕΝΙΚΗ ΔΙΕΥΘΥΝΣΗ ΑΝΩΤΑΤΗΣ ΕΚΠΑΙΔΕΥΣΗΣ
ΔΙΕΥΘΥΝΣΗ ΟΡΓΑΝΩΤΙΚΗΣ & ΑΚΑΔΗΜΑΪΚΗΣ
ΑΝΑΠΤΥΞΗΣ

ΤΜΗΜΑ Δ' - ΦΟΙΤΗΤΙΚΩΝ ΘΕΜΑΤΩΝ &
ΥΠΟΤΡΟΦΙΩΝ

Ταχ. Δ/ση : Ανδρέα Παπανδρέου 37
Τ.Κ. - Πόλη : 15180 - Μαρούσι
Ιστοσελίδα : <http://www.minedu.gov.gr>
e-mail : foitmer.yr@minedu.gov.gr
Πληρ. : Δήμητρα Τράγου
Τηλέφωνο : 210-3443469
FAX : 210-3442365

Αθήνα, 08-10-2015

Αρ. Πρωτοκόλλου: 158615/Ζ1

Τμ. Μετ. Ση/12.10.15

ΠΡΟΣ :

✓ Προς όλα τα Α.Ε.Ι (μέσω τηλεμοιοτυπίας)

ΚΟΙΝ.:

1. Ι. Κ. Υ. - Λεωφ. Εθνικής Αντιστάσεως 41,
14234, Ν.Ιωνία, Αττική.
2. Γενική Γραμματεία Νέας Γενιάς Τμήμα Παιδείας,
Αχαρνών 417-ΑΘΗΝΑ (μέσω τηλεμοιοτυπίας)

ΘΕΜΑ : «Υποτροφίες του ιαπωνικού πενταετούς διδακτορικού κύκλου σπουδών με τίτλο: "GRIPS - Global Governance Program (G-cube)" σε Έλληνες υπηκόους για το 2015-2016».

Σας διαβιβάζουμε το αριθ. Πρωτ. 4926.53/ΑΣ 686/4-9-2015 έγγραφο του Υπουργείου Εξωτερικών - Διεύθυνση Μορφωτικών και Πολιτιστικών Υποθέσεων με θέμα: «Πρόγραμμα Σπουδών GRIPS», με το οποίο διαβιβάσθηκε στην υπηρεσία μας το αριθ. 400/15/ΑΣ476/1.9.2015 έγγραφο της Ελληνικής Πρεσβείας στο Τόκυο, το οποίο αφορά σε προκήρυξη πενταετούς διδακτορικού κύκλου σπουδών, με τίτλο "GRIPS - Global Governance Program (G-cube)". Η ημερομηνία υποβολής των αιτήσεων για το τρέχον ακαδημαϊκό έτος λήγει στις 13-11-2015 και στο επισυναπτόμενο υλικό παρέχονται πληροφορίες για την οικονομική υποστήριξη των σπουδαστών.

Ο ΠΡΟΪΣΤΑΜΕΝΟΣ ΤΗΣ ΔΙΕΥΘΥΝΣΗΣ

ΓΕΩΡΓΙΟΣ ΜΑΛΛΙΟΣ

ΡΙΣΤΟ ΑΝΤΙΓΡΑΦΟ

επί τη Διεύθυνση Ηλεκτρονικών - Δικτυακών
Υποδομών
Τμήμα Πρωτοκόλλου, Αρχείων και Μέσων

ΑΘΑΝΑΣΙΟΠΟΥΛΟΣ ΚΩΝΣΤΑΝΤΙΝΟΣ

Εσωτερική Διανομή:

1. Διεύθυνση Ευρωπαϊκών και Διεθνών Θεμάτων
- Τμήμα Διεθνών Σχέσεων
2. Τμήμα Ενημέρωσης του Πολίτη
3. Δ/ση Οργανωτικής και Ακαδημαϊκής Ανάπτυξης



01/15-9
[Handwritten signature]



Υ.ΠΟ.ΠΑΙ.Θ./ΚΠ
139483/08-09-2015 9:23:43
ΣΤ



**ΕΛΛΗΝΙΚΗ ΔΗΜΟΚΡΑΤΙΑ
ΥΠΟΥΡΓΕΙΟ ΕΣΩΤΕΡΙΚΩΝ
ΕΙ ΔΙΕΥΘΥΝΣΗ ΜΟΡΦΩΤΙΚΩΝ
& ΠΟΛΙΤΙΣΤΙΚΩΝ ΥΠΟΘΕΣΕΩΝ**

Αθήνα, 4 Σεπτεμβρίου 2015
Α.Π.: 4926.53/ΑΣ 686

36971
36971

ΠΡΟΣ: Υπουργείο ΠΟ.ΠΑΙ.Θ
Γενική Διεύθυνση Ανώτατης Εκπαίδευσης
Δ/ση Οργανωτικής και Ακαδημαϊκής Ανάπτυξης
Τμήμα Δ' - Φοιτητικών Θεμάτων και Υποτροφιών
ΚΟΙΝ.: Πρ. Τόκιο (χ.σ.)
ΕΔ.: Α11 Δ/ση (χ.σ.)

ΘΕΜΑ: «Πρόγραμμα Σπουδών GRIPS»

Διαβιβάζουμε έγγραφο υπ' αριθμ. 400/15/ΑΣ476/1.9.2015 της Πρεσβείας μας στο Τόκιο που αφορά σε προκήρυξη πενταετούς διδακτορικού κύκλου σπουδών με τίτλο «GRIPS – Global Governance Program (G-cube)» και παρακαλούμε για την ενημέρωση Πανεπιστημιακών Ιδρυμάτων και Ινστιτούτων.

Ο Διευθυντής

[Handwritten signature]

Δημήτρης Μ. Αλεξανδράκης
Πρέσβυς

ΔΓ/

1 Sep 2015 11:44

Επείγουσα

7640



15 005 7515 R

ΕΛΛΗΝΙΚΗ ΔΗΜΟΚΡΑΤΙΑ
Πρεσβεία της Ελλάδας

Τόκυο

ΕΙΣ ΑΓΧΕΡΑ
ΕΙΣ ΔΙΑΒΑΘΜΗΤΟ
ΚΑΝΟΝΙΚΟ
ΑΔΑΦ
ΑΡ
ΑΔΑΦ
ΑΡ

3225

ΑΔΙΑΒΑΘΜΗΤΟ
ΚΑΝΟΝΙΚΟ

5926-53/2

ΑΣΓΡ

K. Suda
K. K...

Τόκυο, 1 Σεπτεμβρίου 2015
Α.Π. Φ.400/15/ΑΣ 476

ΠΡΟΣ: - ΕΙ Διεύθυνση
ΚΟΙΝ: - ΑΠ Διεύθυνση

ΘΕΜΑ: Διαβίβαση προγράμματος Σπουδών GRIPS)

Διαβιβάζεται προκήρυξη «Προγράμματος Παγκόσμιας Διακυβέρνησης» του National Graduate Institute for Policy Studies (GRIPS), πενταετούς διάρκειας με παρεχόμενη, ωστόσο, δυνατότητα ολοκλήρωσης των σπουδών και σε τρία έτη. Η ημερομηνία υποβολής των αιτήσεων, για το ακαδημαϊκό έτος 2016, λήγει στις 13.11.2015. Στο επισυναπτόμενο υλικό παρέχονται περισσότερες πληροφορίες όπως περί οικονομικής υποστήριξης των σπουδαστών. Παρακαλούμε για την ενημέρωση των αρμοδίων φορέων.

ΚΑΡΑΤΣΩΛΗΣ

Εθν. Συνημ. Σελ.: 7

1. Sep. 2015 11:45

Embassy of Greece

No. 7640 P. 2

His Excellency Mr. Loukas KARATSOLIS
Embassy of Greece in Japan

August 27, 2015

Your Excellency,

Announcement of a Ph.D. Program at GRIPS (G-cube)

We are proud to announce that the National Graduate Institute for Policy Studies (GRIPS) has started a new 5-year Ph.D. program called "GRIPS Global Governance Program (G-cube)" in October 2014.

G-cube is 5-year program, Master's and Ph.D., that aims to create leader of leaders who have a broad perspective based on firm knowledge in history and liberal arts, and can deal with various issues that are arising due to the emerging new world order and changing power dynamics, whether they are in government, private sector or international organizations.

The program was developed out of a sense of crisis that the world is faced with new and serious problems, such as financial crises, terrorism, energy challenges, and environmental issues, behind which lie conflicting interests, large value gaps, dysfunctional global governance systems, escalating globalization, the rise of emerging states, and drastic changes in the distribution of wealth and power in the world; and a new type of leader is needed to address these problems and forge a path to a new age. GRIPS has taken on as part of its mission to respond to this call and produce such leader of leaders needed in these changing times.

Curriculum

The curriculum is designed to equip students with (1) a broad historical perspective, which will help them understand the true nature of policy issues and predict their overall impact, (2) strong analytical ability needed to develop insightful and effective policies, and (3) effective communication skills to convey ideas and opinions across languages, cultures, religions, and nationalities.



政策研究大学院大学
NATIONAL GRADUATE INSTITUTE
FOR POLICY STUDIES

Gateway to
Global Leadership

1. Sep. 2015 11:45 Embassy of Greece

No. 7640 P. 3

Schedule

The program is about to welcome its second batch of students, 11 from all over the world, who were selected out of more than 140 applications this year. For year 2016, to start in October 2016, deadline for application submission is November 13, 2015. The standard enrollment period is 5 years, but the curriculum is designed so that hard-working students will be able to complete in 3 years.

Financial Support

Generous financial support is offered: students will receive full scholarship during their stay in Japan; entrance and tuition fees will be waived; and students from overseas will be provided a round-trip economy-class air ticket. Further, once they complete the Master's course and enter the Doctoral course, students will be entitled to a research fund.

We have prepared first-class professors and practitioners, a flexible yet challenging curriculum, and good financial support for this program. Now all we need are good students. It would be highly appreciated if you could encourage those who may be interested to apply, if not this year, then in the next few years.

Thank you for your time and consideration.

Yours respectfully,
Takashi Shirashi



President, GRIPS

Attached (10): leaflets of GRIPS Global Governance Program (G-cube)

For further information:

- On GRIPS: <http://www.grips.ac.jp/en>
- On the program: <http://www.grips.ac.jp/g-cube>
- On application procedures: admissions@grips.ac.jp
- Inquiry on the program: leading-ml@grips.ac.jp



政策研究大学院大学
NATIONAL GRADUATE INSTITUTE
FOR POLICY STUDIES

*Gateway to
Global Leadership*

1. Sep. 2015 11:45

Embassy of Greece

No. 7640 P. 4



Takashi Shirashi
President

Message from the President

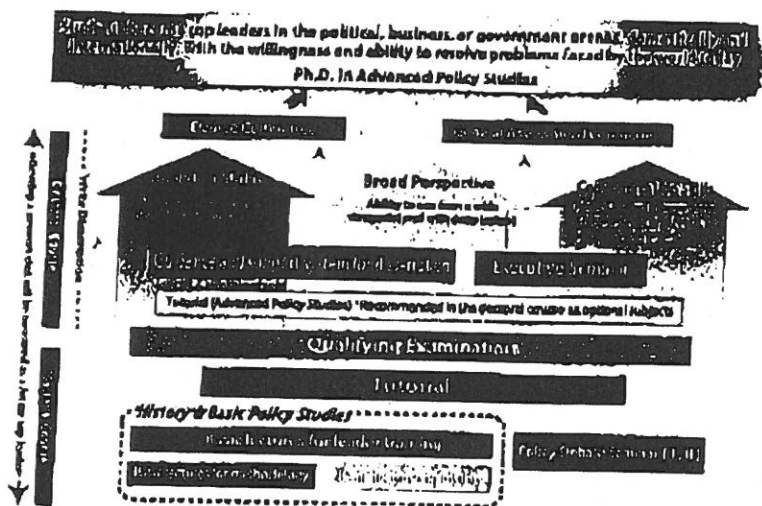
The world is faced with new and serious problems, such as financial crises, terrorism, energy challenges, and environmental issues. Behind them lie conflicting interests, large value gaps, dysfunctional global governance systems, escalating globalization, the rise of emerging states, and drastic changes in the distribution of wealth and power in the world. A new type of leader is needed to address these problems and forge a path to a new age. These leaders require qualities, competencies, and skills that conventional institutions of higher education, which focus on nurturing highly specialized professionals, are not equipped to instill.

Against this background, the National Graduate Institute for Policy Studies (GRIPS) has created a new five-year doctoral program, the Advanced Program for Global Leaders in the Changing World, or GRIPS Global Governance Program (G-cube) for short, which aims to produce a new type of leader for government, business, and international areas. The program will equip its participants with: (1) a broad historical and cultural perspective, which will help them understand the nature of policy issues and predict their overall impact, (2) strong analytical ability needed to develop insightful and effective policies, (3) effective communication skills to convey ideas and opinions across languages, cultures, religions, and nationalities, and (4) the willingness and ability to resolve problems faced by the world today.

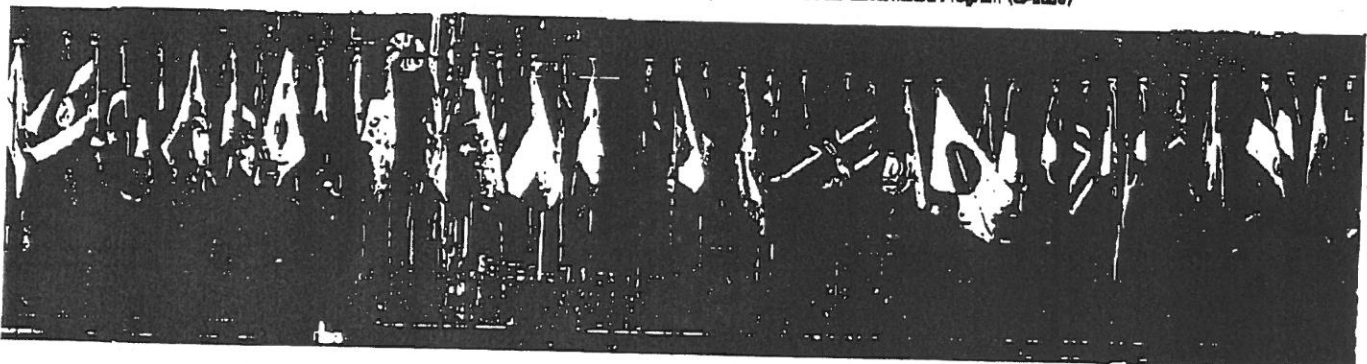
This program was selected in 2013 for the Program for Leading Graduate Schools Project by Japan's Ministry of Education, Culture, Sports, Science and Technology (MEXT) and accepted the first class of students—mainly professionals with work experience in government, politics, industry, or finance—in October 2014.

We look forward to meeting young promising students who aspire to become a leader of leaders in this changing world.

Proposing a New Human Resource Development Model to Nurture Leader of Leaders



Concept of GRIPS Global Governance Program (G-cube)



1. Sep. 2015-11:46 Embassy of Greece

No. 7640 P. 5

Study at GRIPS

Students Support

Center for Professional Communication

The mission of the Center for Professional Communication is to support GRIPS' students, faculty, and staff in developing effective professional communication skills and competencies needed to communicate productively in an environment of multiple stakeholders. To this end, we offer a range of instruction and support in fundamental areas of professional communication in English and Japanese including policy paper writing, professional speaking, grant proposal writing, and digital communications. We also provide opportunities for cultural and academic exchanges through a self-access learning center, organize seminars and special events related to all aspects of professional communication, and prepare customized materials for students and staff on academic and professional writing and language learning.

Health Services Center

The Health Services Center provides free-of-charge medical and counseling services including medical advice, first aid, and specialist referrals.

Student Rooms

Each student is given an individual study space in one of the student rooms, which is accessible 24 hours a day. Individual spaces are equipped with a desk, a comfortable chair, and a bookshelf and are separated with partitions for maximum privacy.

Fitness Center

GRIPS has a modern fitness center equipped with strength training machines, cardiovascular workout machines, a blood-pressure measuring device, and a shower. The fitness center is open six days a week and is free of charge.

Networking

One of the greatest resources and joys of studying at GRIPS is the diversity of the student community. The connections you make at GRIPS are a valuable part of your degree. The GRIPS Alumni Network will ensure they are lifetime bonds by keeping you in touch with fellow alumni and the school.

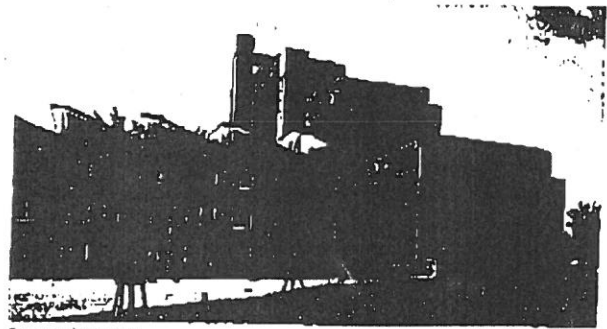
As a GRIPS graduate, you join an impressive network of more than 3,900 alumni who are actively shaping future policies in more than 100 countries around the world. Connectivity and communication sit at the heart of the alumni community. We offer a variety of ways to remain engaged with GRIPS and strengthen your ties with fellow alumni around the globe. These include alumni reunions, seminars, a searchable alumni directory and online networking opportunities utilizing social media such as Facebook and LinkedIn.

For more on our distinguished and promising alumni, please check out the "Alumnus of the Month" feature on our website.
<http://www.grips.ac.jp/en/alumni/aimof>

Campus

Our modern, innovatively designed campus is located in Roppongi, the very heart of Tokyo, and is close to the Japanese Diet and government ministries. It features spacious, fully equipped classrooms, individual study spaces for students, a sky-lit atrium with panoramic windows and indoor terraces, Japanese-style rooms, and a beautiful multi-purpose conference hall. The design maximizes daylight, creates a warm and pleasant atmosphere, and promotes interaction among students.

The GRIPS campus was designed by the world-renowned architect Richard Rogers in partnership with Yumoto Naoki.



Roppongi Campus.

Photo: Yumoto Naoki



GRIPS

7-22-1 Roppongi, Minato-ku, Tokyo, 108-8477 TEL: +81-3-6439-6000 FAX: +81-3-6439-6010 URL: <http://www.grips.ac.jp/>

GRIPS Admissions Office

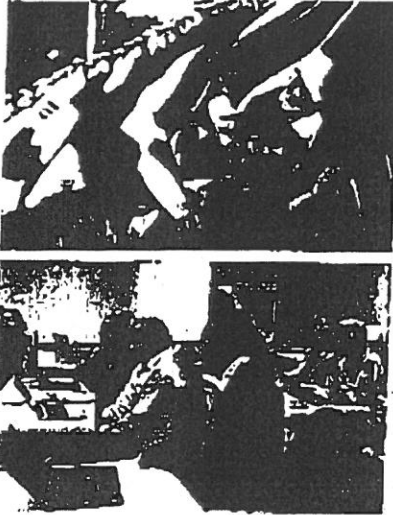
TEL: +81-3-6439-6046 FAX: +81-3-6439-6050 E-mail: admissions@grips.ac.jp

1. Sep. 2015 11:47

Embassy of Greece

No. 7640 P. 6

Characteristics of GRIPS Global Governance Program (G-cube) -



Curriculum to Nurture a Leader of Leaders

The curriculum for this program is designed on the following three pillars:

1) Basic knowledge and abilities required for leaders

To make appropriate decisions as a top leader based on thorough consideration from settings in national governments, international institutions, or the business world in an increasingly complex global society, one needs to develop a broad perspective and the ability to understand various specific and concrete issues and problems in an overall context, as well as to grasp the root of problems. For this purpose, students will study history to develop a broad perspective and understanding of the various issues the world faces in a macrocosmic context. Lecturers are invited from domestic and overseas political, economic, official, and academic backgrounds to help students acquire basic knowledge and a variety of different viewpoints.

2) Deep knowledge and strong analytical skills for individual policy issues

To address current issues, deep knowledge and strong analytical skills for various individual policy issues are essential. Students will first take basic courses on politics, economics, international relations, science and technology innovation, as well as methodologies for administrative organization management. Next, students choose from four clusters—global issues, developed countries, emerging countries, and developing countries—to acquire deeper knowledge and strong analytical skills through intensive discussions of policy issues specific to each of the four clusters in a tutorial-style class consisting of a small number of students. The doctoral course includes the Executive Seminar, a study-camp opportunity where students participate in intensive lectures, role-playing simulations, discussions, and guidance for their theses. The entire degree program is designed to provide students with intensive guidance and new stimulation.

3) Communication skills to overcome differences in language, culture, history, specialization and nationality

All classes in this program are conducted in English. Students will study together in English, collaborate and compete with each other, all the while nourishing mutual respect and the ability to develop deeper levels of communication. In addition to the lectures, students will attend workshops with simulations and other activities for intensive discussions with other students. This stimulates interaction and helps students acquire the ability to engage in intellectual discussions, despite differences in language, culture, history, specialization, and nationality. An opportunity for practical training in crisis management is also provided to help students develop as leaders and deliver appropriate messages in different public settings, such as responses to the media in an emergency. In the doctoral course, the program provides support, including financial support, to students who wish to participate in an internship at international organizations or conduct research overseas.

Program Outline

Degrees offered

Ph.D. in Advanced Policy Studies

M.A. in Advanced Policy Studies

Language of Instruction

English

Time Schedule

Program Duration: 5 years (minimum 3 years)

Enrollment: October

Graduation: September

For application please refer to:

<http://www.grips.ac.jp/en/admissions/apply/>



This program features many innovative instructional approaches. One such approach is student-led tutorials, in which students take the lead in rigorous discussions of their subjects of interest with professors and other students. Every week, students will explore different issues and organize and defend their own ideas. Professors will in turn face a real test of their intellectual depth and versatility. We expect such discussions to be mutually rewarding as they boost students' intellectual capacity and allow professors to observe students' progress first hand. I look forward to meeting new students—young leaders who aspire to the global stage.

Tetsushi Sonobe

Program Director, Professor and Vice President

1. Sep. 2015 11:48

Embassy of Greece

No. 7640 P. 7

Composition of the Curriculum

I Required Courses

The classes and seminars are designed to enhance the basic knowledge, skills and the communication skills required of leaders. These courses are characteristic of this program.

II Recommended Courses

The classes and tutorials enhance academic skills in politics, economics and history, which this program considers important.

III Elective Courses

GRIPS common subjects teach the foundation of social sciences.

Courses: GRIPS Global Governance Program (G-cube)	
Category	Course Name
I Required Courses	• Leading a Nation in the Changing World ¹⁾
	• Perspectives of the World ¹⁾
	• Introduction to Public Policy Studies
	• Policy Debate Seminar I - II ¹⁾
	• Policy Workshop
II Recommended Courses	• Diplomatic History of Modern Japan
	• Comparative State Formation
	• Global Economic History
	• International Relations
	• Comparative Political Economy
	• Development Economics
	• Essential Macroeconomics
	• Structure and Processes of Government
	• Comparative Analysis on Science, Technology and Innovation Policy
	• Tutorial I - V ¹⁾
• Executive Seminar I - III ¹⁾	
III Elective Courses	• Microeconomics I
	• Essential Macroeconomics
	• Macroeconomics I
	• Introduction to Applied Econometrics
	• Theoretical Foundation of Economic Policy
	• Government and Politics in Japan
	• International Political Economy
	• International Security Studies
	• Political Economy of Modern Japan
	• International Relations in East Asia (Advanced)
• State and Politics in Southeast Asia (Advanced)	
• Introduction to Quantitative Methods	
• Introductory Statistics	

(As of July 2015)

G-cube Special Courses

Leading a Nation in the Changing World / Perspectives of the World¹⁾

Two courses are compulsory: Leading a Nation in the Changing World and Perspectives of the World. The former is designed for students to acquire the qualities required of top leaders and to develop the foundation for broader knowledge. Political leaders with actual experience controlling a national crisis are invited from different parts of the world, and students learn from their experiences. The latter course includes experts from different fields, including economic circles, and provides opportunities to learn from their experiences and perspectives on the world.

Policy Debate Seminar²⁾

The Policy Debate Seminar is held in the Winter and Spring terms to foster the ability to think from a variety of different perspectives through practical training, including writing, presentations, and debates. A former chief economist of the World Bank and political leaders are invited as guest lecturers and they provide lectures and workshops with simulations of crisis management. The seminar gives students an opportunity to develop skills in intellectual discussion and communication with a large number of people in an understandable way, despite differences in language, culture, history, specialization, and nationality.

Tutorial³⁾

A tutorial is an intensive, interactive teaching style where one professor is assigned to a small group of two to five students. Participants in the tutorial deepen their knowledge on the specific theme through discussions and presentations. Through analysis, counterargument, criticism and intensive discussions with one another, as well as with the professor, students acquire in-depth knowledge of various individual policy issues and strong analytical skills. In addition to the discussions, importance is placed on writing, thinking, predicting, and communicating, which are required to establish and nourish a broader perspective. Students must choose and complete more than three tutorials from at least two of the four policy issue clusters: global issues, developed countries, emerging countries, and developing countries.

Executive Seminar⁴⁾

The Executive Seminar is compulsory for students in the doctoral course. In addition to the professors responsible for this program, experts from political, official, economic, and academic backgrounds, both domestic and international, are invited as lecturers so that students have an intensive study-camp opportunity. Students not only attend lectures on contemporary issues, but also attend tutorial style or role-play group discussions and participate in group work to acquire the six abilities (predicting, thinking, communicating, leading, deciding and describing) required to develop a broader perspective.



During my tenure as the Japanese Ambassador to the United Nations, I met first-class leaders who could not only understand the crux of the problem but also propose a compromise acceptable to all involved regardless of differences in culture, nationality, religion, or language. My experience has motivated me to promote this ambitious program in Japan, a country that is a unique blend between East and West. This program is a bold experiment in training—with the urgency that today's global reality demands—decision makers, be it in the government, international organizations or the private sector, who understand the world around them and who see themselves—and are seen—as leaders.

Shinichi Kitaoka

Senior Professor and Executive Advisor to the President

1. Sep. 2015 11:49

Embassy of Greece

No. 7640 P. 8

Financial Support

Students enrolled in this program who satisfy the prescribed conditions will be awarded fellowships depending on academic performance in order to ensure an environment where they can devote themselves to study. Students in the doctoral course who have passed the qualifying examination will obtain research funds that cover field surveys, interviews, and textbook expenses as required for a doctoral thesis. Students who wish to participate in an internship at international or other institutes may also obtain financial support where necessary.

Profiles of Current Students

- Country / Affiliation / Area of study (As of July 2015)**
- Pakistan / Intelligence Bureau / International relations, counter terrorism and security dynamics among strong and weaker nations**
- Ethiopia / Office of the Prime Minister / Nexus between investment on infrastructure and development**
- Maldives / South Asian Association for Regional Cooperation (SAARC) / Economic policies and theories of international relations**
- Indonesia / Ministry of State Secretariat / Economic development and international relations, focused mainly on economic policies and theories of international relations**
- Rwanda / Office of the Prime Minister / How economic theories affect political choices and how different national states have applied these theories in their development path**
- Ghana / Office of Head of Civil Service / Public administration, capacity building policies**
- Tanzania / Ministry of Finance / Economic policy formulation and policy implementations particularly in developing countries**
- Thailand / Bank of Thailand / Asian financial markets, law & economics and international relations**
- Laos / Ministry of Planning & Investment / Regional economic integration in East Asia, development of regional economic corridors and their contribution to human development**
- Kyrgyz Republic / Office of the President / Global governance, focused mainly on politics, public administration and international relations**
- Myanmar / Ministry of Finance / Developed and developing countries' public policies, financial policy and financial institutions**
- Japan / Graduate of GRIPS MP2 / Economic development, non-form sector development, internal/external migration and their effect on women's empowerment**

Students' Voices



Tomomi Tanaka
Japan

You may think you need to narrow down your subject of research before entering a doctoral course, but that is not the case in this program. After entering the course, all students must study economics, politics and history, regardless of your specialized field of study. You will undergo substantial training to improve your expertise at a later stage. We develop a theoretical background and undergo training to express our opinions every day to become leaders who can understand the arguments of both researchers and working-level people. I am confident that this is a valuable and unique program.



Fabien Mwijoro
Rwanda

This program not only reinforces my knowledge but also constitutes the best opportunity to experience the rich cultural diversity and wisdom of the faculty and fellow G-cube students. I consider this unequalled experience to be a cornerstone in my intellectual and cultural development and a key ingredient to my future career success as I endeavor to become a better leader.



Ployrat Amornvitan
Thailand

G-cube allows me to enhance my leadership and analytical skills through in-class discussions with excellent professors and students from different cultural and professional backgrounds. G-cube offers courses such as *Leading a Nation in the Changing World* and *Essential Macroeconomics* which are essential for my current research on the financial situation in Thailand.

